

Attachment A

| |
|--------------------------------------|
| Revised Project Scope Summary |
|--------------------------------------|

Revised Scope Report Sydney Park Brick Kilns

2 Princes Highway Alexandria



Location

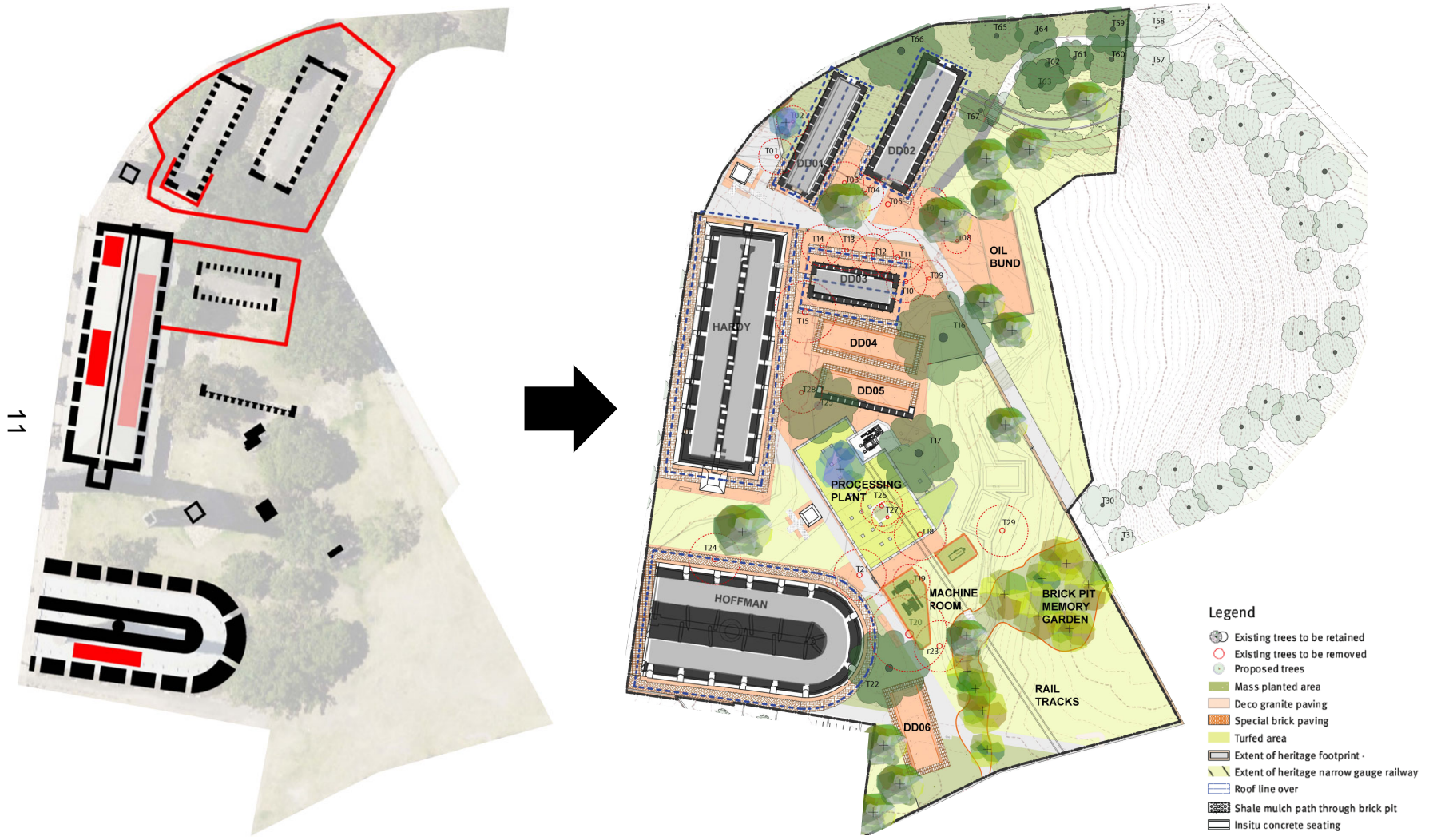


View looking south from Sydney Park Road

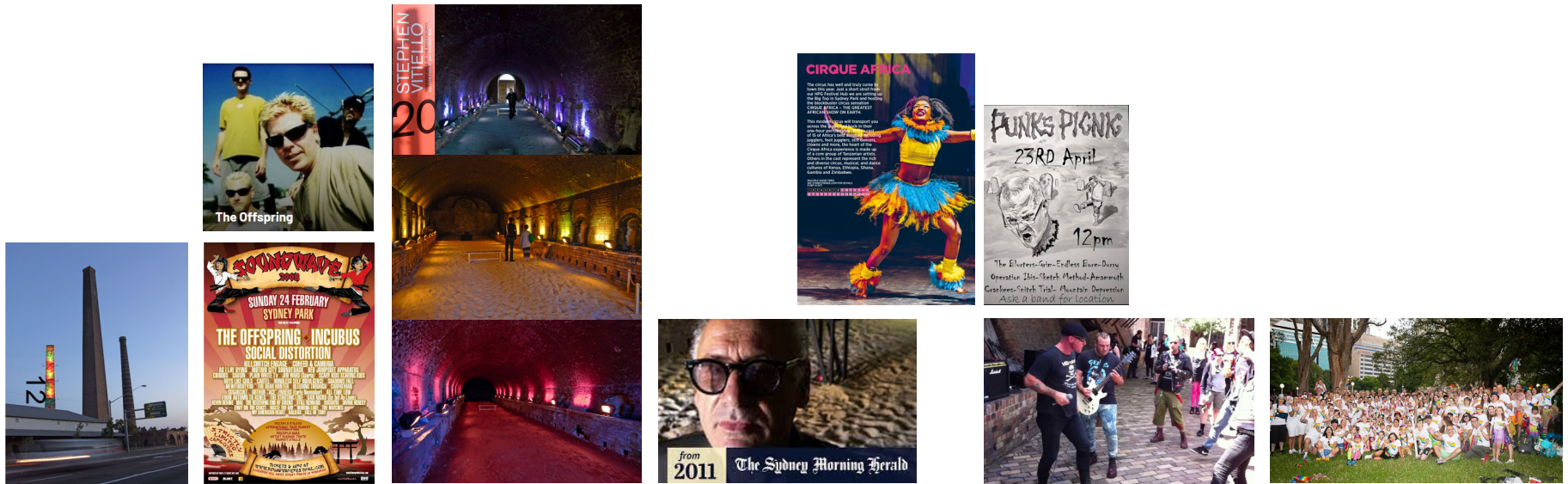


Main pedestrian entrance to kilns

Current Scope + Approach



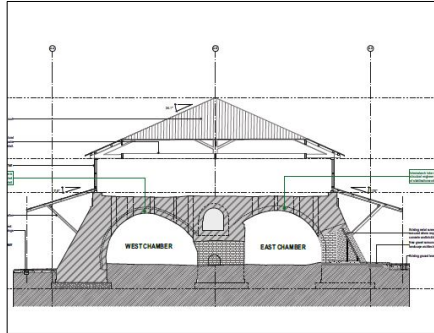
Events / Activations 2006 - 2023



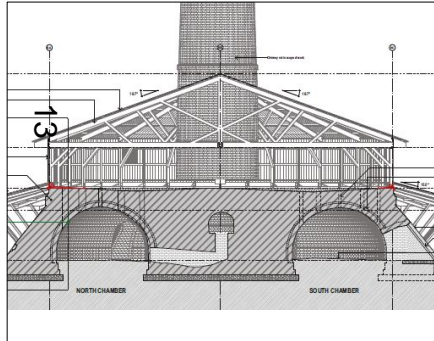
| 2006 | 2008 | 2010-11 | 2013 | 2016 - 2017 | 2018 - 2019 | 2020-2021 | 2022-2023 |
|------------------|---|---|--|--|--|--------------|------------------|
| Christmas lights | Sound Wave February Sydney Park The Offspring, Incubus, Girls like Boys | Stephen Vitiello Project 20 - Kaldor Public Art Projects 2011 Cine Opera by Michael Nyman (UNSW) | Punks Picnic City Farm Farmers' Market | Rainbow Families International Equality Day (200) City Farm Farmers' Market Cirque Africa Event | Family Pride Rainbow Families Punks Picnic | Punks Picnic | Rainbow Families |

Above is a timeline summary of the last 15 years events/activations. In recent years due to the poor condition and fencing around the kilns, these events and activations have ceased. NOTE: The timeline does not include the weekly community run activation including drumming circles and running group.

Review of Kiln Structures



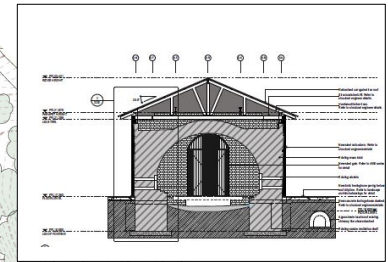
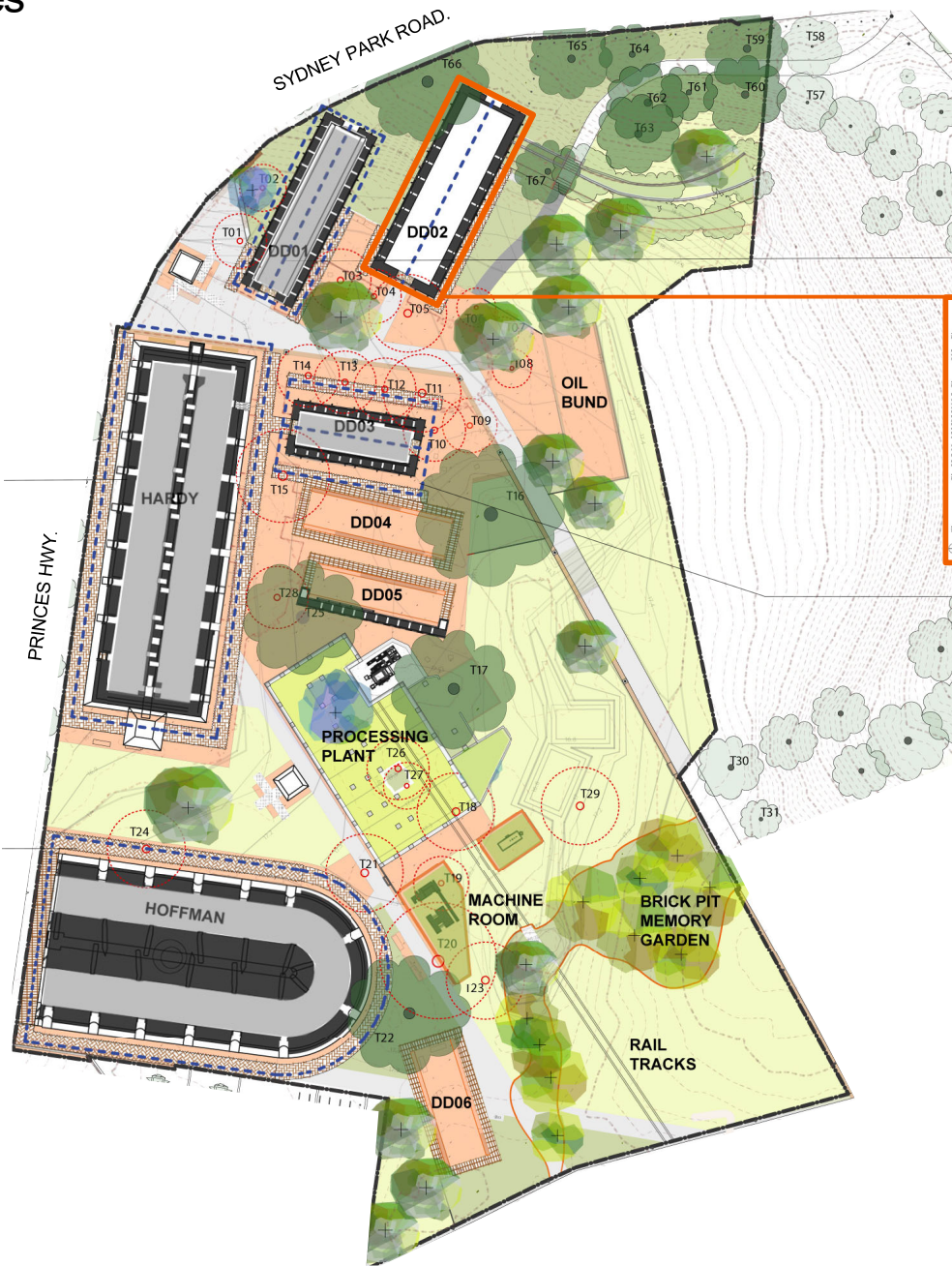
HARDY PATENT



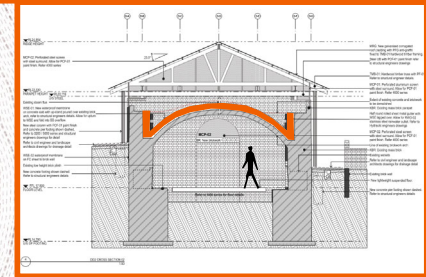
HOFFMAN PATENT

NOTES:

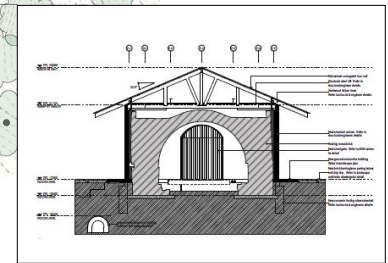
1. Hardy Kiln – 2 separate tunnel like spaces with 1.5m clear path . Entry to Kilns restricted head height.
2. Hoffman Kiln 1.5m clear path of travel accessed from Princes Hwy.
3. Downdraught Kiln 1 (3.6m wide) Downdraught Kiln 2 (4.7m wide) largest of DD kilns future potential use.
4. Downdraught Kiln 3 – (3.2m wide)



DOWNDRAUGHT 1.



DOWNDRAUGHT KILN 2.



DOWNDRAUGHT 3.

Opportunity for Use + Activation

Community + Events Use of DOWNDRAUGHT KILN 2

Recommended uses:

1. Bookable space for Community / Events Use
2. Events / Activation by City e.g. Art & About



2023 Dark Spectrum, Mandylights

VIVID Sydney

Abandoned train tunnels decked out with lights, lasers and robots as part of Sydney VIVID.



2006 Christmas

City of Sydney

Chimneys lit up as part of 2006 Christmas Lighting.



2010 Underworld, Dale Miles

Taylor Square Temporary Art

Large scale arachnid legs emerging from the disused underground men's toilets.



2010 Rush, Nike Savvas

Laneways Temporary Art - City of Sydney

thousands of strips in different colours, suspended, between the heritage buildings bordering Bridge Ln.

Additional Works Required Downdraught Kiln 2

Accessibility:

Floating floor (webforge or similar) is required to provide accessible entry / ground plane within the kiln.

Structural Works:

Additional structural stabilisation works are required via a bonded slab to the external side of the arch to allow the space to be occupied by more than 10 people.

Services:

Conduits for connection to power recommended to be located at entry to down draught kiln – to allow for connection of services to DD Kiln 2 and use for precinct activations.

Waterproofing:

Additional waterproofing works is required to the concrete roof and walls

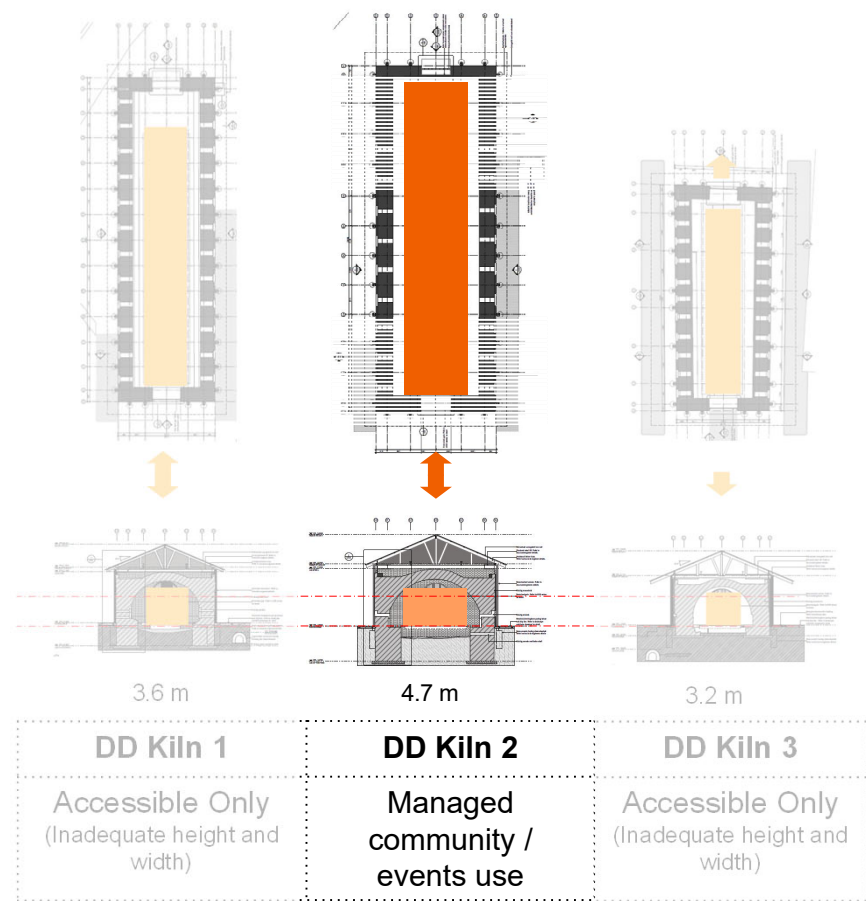
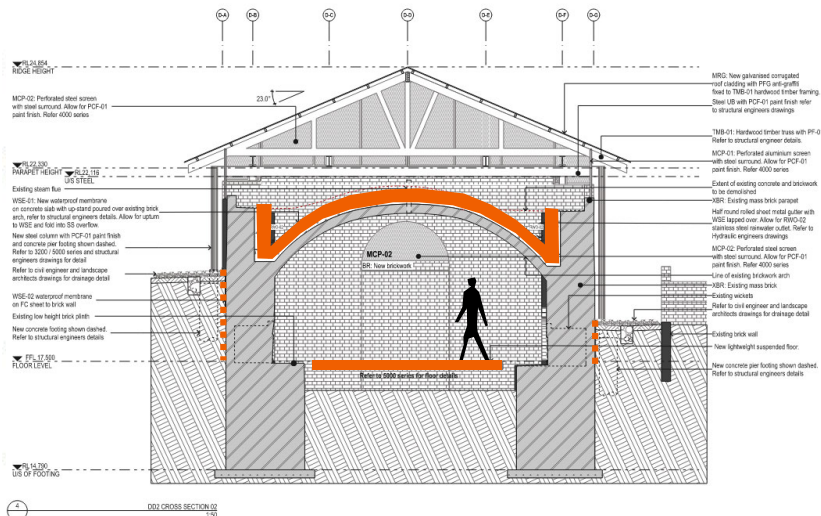
LEGEND

- 2.4m – Habitable Room
- 2.1m – Circulation Only

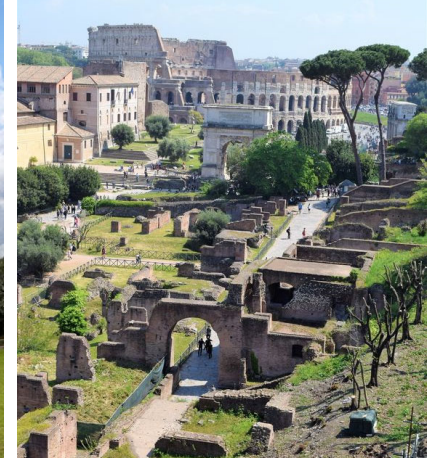
Notes:

1. BCA Ceiling Heights:
Habitable Room - 2.4 m
Corridor / Passageway - 2.1m

* Only DD Kilns have compliant entry. Patent Kiln would require extensive reconfiguration of heritage fabric to enter.



The Strategy



NOTES:

1. Relic in park landscape. (Image Park of the Aqueducts in Rome / Parco degli Acquadotti)
2. Preservation of last remaining in tact brickworks site in Sydney. (Image Paddington Reservoir)
3. Park which frames views to iconic structures
4. Value of the in between of ruin (Image Roman Forum)

*Preservation of the industrial relic in the landscape
+ celebrating the interstitial / in-between*



NOTES:

1. Interactive installation (image artwork VIVID Sydney Dark Spectrum)
2. Temporary City run events (image Park which frames views to iconic structures)
3. Temporary Activations (image Carriage works Markets)
4. Temporary Events (image outdoor cinema)

Activation and events to re-vitalise a highly valued public space

King St Entry - Existing



King St Entry - Proposed



Improving access and simplifying the material palette, the park entry is signified by the iconic markers of the chimneys and the industrial buildings in the landscape.

Precinct Overview - Existing



19

Precinct Overview - Proposed



Processing Plant Looking North - Existing



Processing Plant Looking North - Proposed



Down Draught Kilns Looking North - Existing



Down Draught Kilns Looking North - Proposed

